



**NIPPON
PAINT**

PROTECTIVE COATINGS

HEAVY DUTY COATINGS FOR INDUSTRIAL
(VER. 2)

Protect your
steel structures with
ASIA'S NO.1
PAINT BRAND

CONTENTS

CONVENTIONAL PROTECTIVE COATINGS

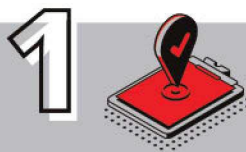
Alkyd Primer	Nippon Paint Red Oxide Primer Nippon Paint Zinc Phosphate Primer FD	pg03
Alkyd Finish	Nippon Paint Aluminium Paint Nippon Paint Micaceous Iron Oxide (MIO) Nippon Paint Protective Finish FD	pg04
Galvanized Steel	Nippon Paint Etching Primer 120 Nippon Paint Galvaprimer Nippon Paint PVB Tech Primer	pg05
Special Niche Products	Nippon Paint 300 High Temperature Primer Nippon Paint 600 High Temperature Primer Nippon Paint 300 High Temperature Finish Nippon Paint 600 High Temperature Finish Nippon Paint Bituminous Solution	pg06

HEAVY-DUTY PROTECTIVE COATINGS

Epoxy Zinc Primer	Nippon Paint Zinc Rich Primer HS Nippon Paint Nippe zinc E2 Primer Nippon Paint NIOZ	pg07
Internal Tank Epoxy Coating	Nippon Paint EA9 Red Oxide Primer Nippon Paint EA9 Finish HB	pg08
Heavy-Duty & Immersed Epoxy Coating	Nippon Paint 9049 / Nippon Paint 9049 GF Nippon Paint Arocoat	pg09
Telecommunication Tower Coatings	Nippon Paint Protective Acrylic Red Oxide Primer Nippon Paint Protective Acrylic Finish	pg10
Universal Surface Tolerant Epoxy Coating	Nippon Paint 8048 Zinc Phosphate Primer QD Nippon Paint 8048 Nippon Paint 8048 MIO	pg11
Polyurethane Finishing	Nippon Paint Polyurethane Recoatable Finish Nippon Paint PUR Lite Finish	pg12
Epoxy Finish	Nippon Paint Penetrative Epoxy Primer Nippon Paint EA4 Finish / Nippon Paint EA4 Finish (EP) Nippon Paint EA7 Finish	pg13 pg14
Project Reference		pg15-16
Coating System		pg17-22

NIPPON PAINT

**As Your
Protective
Coating
Partner**



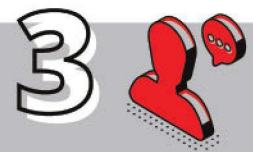
**Trusted brand for
more than 50 years
in Malaysia**

We offer Total Coating & Construction Solutions for multiple segments, multiple industries and multiple surfaces.



**Quality in
every drop**

It is our commitment to innovation in research and development (R&D), adhering a stringent quality control in all our products.



**Service
excellence**

We have our dedicated and proactive sales & technical team that address to all your queries.



“

PROTECTIVE COATINGS

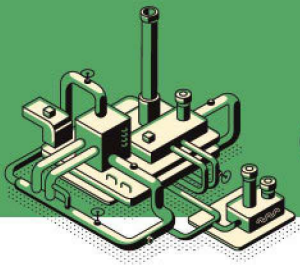
Specially formulated anti-corrosion solution

”

Protect surfaces that are highly prone to corrosion, rust and the detrimental effects of the environment with our anti-corrosion solutions, which encompass both conventional and heavy-duty type coatings.

Our protective coatings is ideal for any metal surfaces such as structural steelworks, storage tanks (for edible products, fuel, oil, water and etc.), pipes, piles, vessels and metal bridges.





CONVENTIONAL PROTECTIVE COATINGS

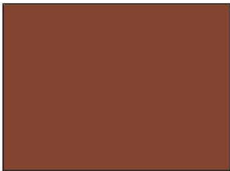


This category is air dry alkyd-based and normally requires simple surface preparation such as hand scrubbing with wire brush or mechanical power tool. It is specially formulated to provide protection against corrosion for surfaces under normal service condition exposed to an environment of light moisture condensation and presence of mild corrosive chemical.

Nippon Paint Red Oxide Primer **Nippon Paint Zinc Phosphate Primer FD**

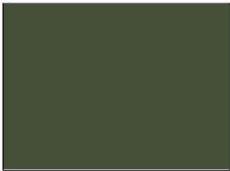
Alkyd-based fast drying rust inhibitive primer is designed for application on wire brushed/power tooled steel surfaces under non-immersion condition to prevent rust formation. It can be overcoated with most alkyd finishes and alkyd micaceous iron oxides such as Protective Finish FD and Micaceous Iron Oxide as intermediate and top coats. (Nippon Paint Zinc Phosphate Primer FD acts as a rust inhibiting primer.)

Nippon Paint Red Oxide Primer



Reddish Brown

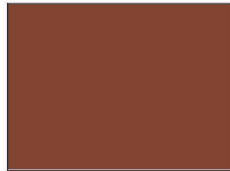
Nippon Paint Zinc Phosphate Primer FD



Grey Green



Light Grey



Reddish Brown



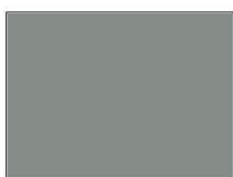
Nippon Paint Aluminium Paint

Nippon Paint Aluminium Paint is a high-quality solvent-based paint. It can be used on all types of suitably primed interior and exterior metal surfaces.



Nippon Paint Micaceous Iron Oxide (MIO)

Alkyd-based coating pigmented with micaceous iron oxide. Being resistant to atmospheric pollution, high humidity and mild chemical fume attack, it gives protection to the interior and exterior of steelwork, typically in the mild marine and industrial environment. Exhibits a matt finish with a metallic lustre. It can be used as a finish topcoat on its own.



Silver



Dark Grey



Grey Black



Neptune Blue



Neon Green

Nippon Paint Protective Finish FD

Nippon Paint Protective Finish FD is a finish coating based on a combination of oil modified alkyd and a special synthetic resin. It has excellent weathering resistance and is recommended as finishing coat for steel structure and iron surfaces under non-immersion condition.



Flamingo 1402



Sun Flower 1505



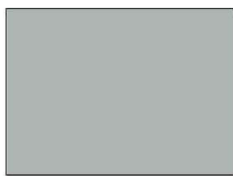
Crystal Mint 1222



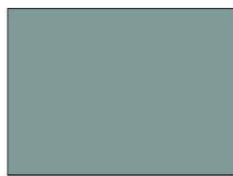
Paradise Blue 1365



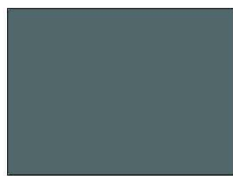
Wira Blue 1471



Lavender Grey 1307



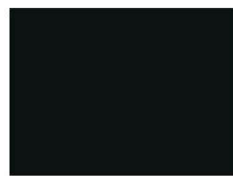
Slate 1325



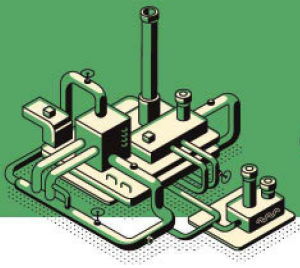
Papier Grey 1139



White 1145



Black 1144



CONVENTIONAL PROTECTIVE COATINGS

Galvanized Steel

Nippon Paint Etching Primer 120 Nippon Paint Galvaprimer

Nippon Paint Etching Primer 120 and Nippon Paint Galvaprimer are two-pack polyvinyl butyral-based, acid-catalysed etching primers. A must for galvanised steel and light alloys before application of other topcoats. It gives excellent adhesion to galvanised steel and light alloys which provides a suitable base for most of the coatings to adhere satisfactorily. (Use Nippon Paint Etching Primer 120 for lighter finishing colours. Use Nippon Paint Galvaprimer for darker finishing colours.)

Nippon Paint Etching Primer 120



Nippon Paint Galvaprimer



Nippon Paint PVB Tech Primer

Nippon Paint PVB Tech Primer is a single-pack modified polyvinyl butyral, acid-catalysed etching primer. It is a fast-drying primer with excellent adhesion, suitable for steel, galvanised steel and light alloys.



Nippon Paint 300 High Temperature Primer Nippon Paint 600 High Temperature Primer

A special solvent based paint suitable for priming interior & exterior ferrous surfaces subjected to high heat. It is recommended to overcoat the primer with the respective finish. (Maximum operating temperature for each product as indicated in the product name.)



Primer

Nippon Paint 300 High Temperature Finish Nippon Paint 600 High Temperature Finish

A special solvent based paint for interior & exterior ferrous surfaces subjected to high heat. Contains aluminium paste which gives excellent corrosion resistance. Must be used with their respective primer. (Maximum operating temperature for each product as indicated in the product name.)



Aluminium



White*

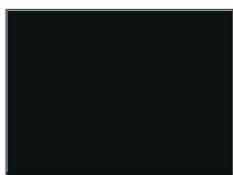


Red*

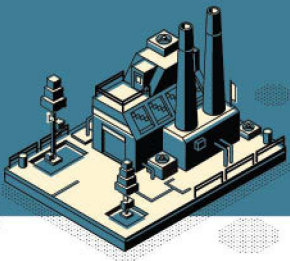
**Available for Nippon Paint 300 High Temperature Finish only*

Nippon Paint Bituminous Solution

Excellent wetting and water-resistant properties that provides an excellent finish for internal lining of water tanks.



Black



HEAVY-DUTY PROTECTIVE COATINGS

Epoxy Zinc Primer

Comprehensive coating solutions specially formulated to provide protection against corrosion for surfaces under severe service condition exposed to an environment of medium to high condensation and presence of corrosive chemicals.

Nippon Paint Zinc Rich Primer HS Nippon Paint Nippe zinc E2 Primer

Organic Zinc Rich Primers - Two-pack epoxy zinc rich primers which can be applied in commercial abrasive blasted standard (SSPC-SP10, Sa 2.5) steel for cathodic protection. Ideal as touch-up primer and can be applied by brush or roller. (Use Nippon Paint Nippe zinc E2 Primer for long term protection at marine and heavy industrial areas.)

Nippon Paint Zinc Rich Primer HS



Nippon Paint Nippe zinc E2 Primer



Nippon Paint NIOZ

Inorganic Zinc Primer - A two-pack solvent based which can be applied on commercial abrasive blasted standard (SSPC-SP 10, Sa 2.5) base coating based on ethyl silicate and zinc dust. It prevents corrosion and provides excellent resistance to weathering, abrasion, impact, heat and many solvents, making it suitable for on commercial abrasive blasted standard (SSPC-SP 10, Sa 2.5) for severe corrosive services.

Nippon Paint EA9 Red Oxide Primer

A two-pack high-build amine adduct cured food grade epoxy primer. It can be overcoated with food grade epoxy finish, Nippon Paint EA9 Finish HB for coating of most of the edible storage tanks.



Nippon Paint EA9 Finish HB

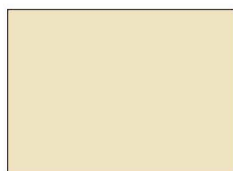
A two-pack high-build amine-adduct cured food grade epoxy finish. It is designed as an intermediate or finishing coat for the internal coating of edible storage tanks and interior primed steel. It can be painted directly on masonry, galvanized surfaces and non-ferrous metal i.e. aluminum and light alloys. It can also be recommended as a hard, thick barrier coat which can act as a finishing for storage tank.



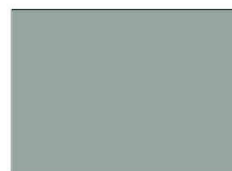
Executive Grey 0104



White BS 9102



Ivory BS 4052



Misty Grey 1457



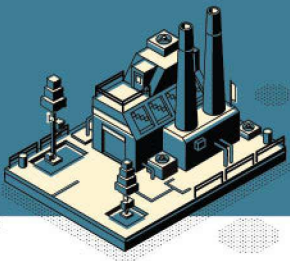
Ash Grey BS 9093



Calm Green BS 6070



Black BS 9103



HEAVY-DUTY PROTECTIVE COATINGS

Heavy-Duty & Immersed Epoxy Coating

Nippon Paint 9049 Nippon Paint 9049 GF*

A two-packed epoxy cycloaliphatic amine coating that act as a high build primer and a self-priming finish with excellent corrosion resistance. (Nippon Paint 9049 GF* is reinforced with glass flakes.)



Reddish Brown*



RAL 7047



N7.0*



RAL 9005

*Colours available for Nippon Paint 9049 GF

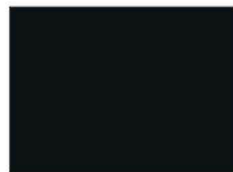


Nippon Paint Arocoat

A two-pack high-build coal tar epoxy coating, which provides excellent protection against corrosive chemicals and resistance against salt and fresh water.



Brown



Black

Nippon Paint Protective Acrylic Red Oxide Primer

Single pack acrylic based primer for use on steel, galvanised steel and aluminium window frames. It provides fast drying properties with excellent chemical and corrosion resistances.



Red Oxide Primer



Nippon Paint Protective Acrylic Finish

Single-pack acrylic semi-gloss with good durability against exterior weathering. The detergent resistance and washable finish makes maintenance cleaning in high traffic area easy.

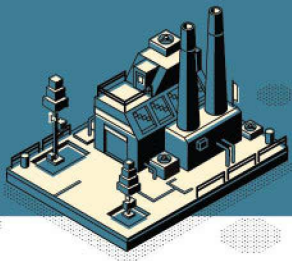


Tower Red 148**



White 145**

**Approved by The Civil Aviation Authority of Malaysia (Previously known as Department of Civil Aviation (DCA))

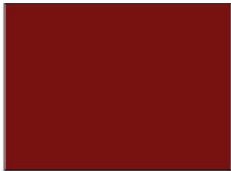


HEAVY-DUTY PROTECTIVE COATINGS

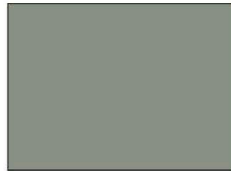


Nippon Paint 8048 Zinc Phosphate Primer QD

A two-pack high build surface/tolerant epoxy coating that combines superior barrier properties with excellent wetting, adhesive characteristics and low VOC.



Reddish



Pearl Grey

Nippon Paint 8048

Surface tolerant/mastic and low VOC, high performance advanced technology semi-gloss mastic. As a multi-purpose mastic with high volume of solids. It provides excellent corrosion protection and resistance against oil, solvents, chemicals, splashes and spillages.



Aluminium 1463



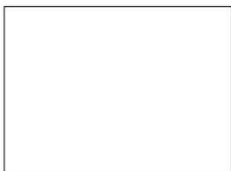
Straw Cream 1134



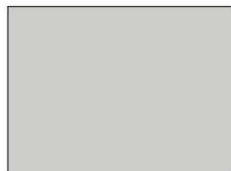
Marble Grey 0104



Indian Red 1462



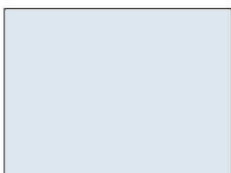
Off White



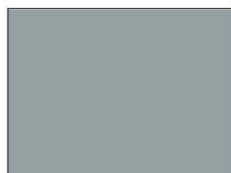
RAL 7035

Nippon Paint 8048 MIO

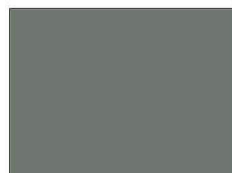
Two-pack epoxy polyamide coating pigmented with micaceous iron oxide that provides a high build impervious barrier that gives excellent adhesion and surface wetting properties. It has unique combination of anti-corrosion pigments, and rust penetrants giving it excellent corrosion resistance in virtually any environment.



Light Grey



Silver



Dark Grey

Nippon Paint Polyurethane Recoatable Finish

Two-pack aliphatic acrylic PU glossy finish for exterior and interior surfaces. This high-performance finish has excellent resistance to abrasion, scratches, impact, condensing humidity, staining and splashes of chemicals. Nippon Paint Polyurethane Recoatable Finish is ideal for heavy-duty industrial areas where protection of the surfaces are important.



Ash Grey **BS 9093**



Ivory **BS 4052**



Executive Grey **0104**



Misty Grey **1457**



RAL **7035**



Venus **1406**



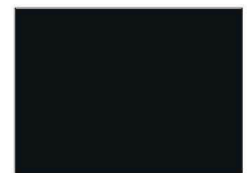
Pearl **1301**



Grass Green **218**



Calm Green **BS 6070**



Black **BS 9103**



French Blue **BS 381C166**



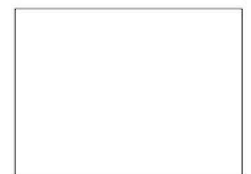
Sky Blue **RAL 5015**



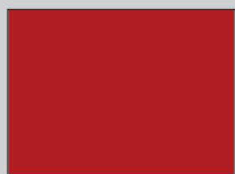
Paradise Blue **1365**



Traffic Yellow **RAL 1023**



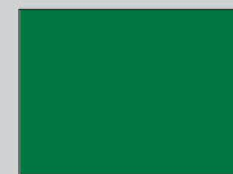
White **BS 9102**



▲ Signal Red **BS 537**



▲ Golden Yellow **BS 356**



▲ Signal Green **RAL 6032**



▲ International Orange **BS 592**

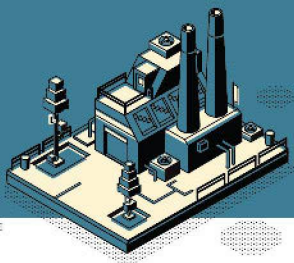
▲ Signal Colours

Nippon Paint PUR Lite Finish

MEDIUM-DUTY PROTECTIVE COATINGS

A two component PU coating for all your basic metal surfaces protection. This good performance glossy finishing provides good impact and chemical resistance. Nippon Paint PUR Lite Finish provides ideal protection for medium-duty areas.

NOTE: Colour selection is the same as Nippon Paint Polyurethane Recoatable Finish



HEAVY-DUTY PROTECTIVE COATINGS



Nippon Paint Penetrative Epoxy Primer

Two-pack amidoamine cured epoxy finish for use on concrete floor surfaces, which provide good adhesion to the substrate. Acid-treatment should be done prior to application. It is suitable for use as a tie coat between concrete substrate and solvent-based topcoat, such as Nippon Paint EA4 Finish.

Nippon Paint EA4 Finish Nippon Paint EA4 Finish (EP)

Two-pack amine adduct cured epoxy finish with hard-wearing, chemical-resistant and excellent abrasion resistance for steel structures. The glossy and smooth finish is suitable for use in areas subjected to high level of abuse and aggressive chemicals with ease of maintenance and cleaning. Use Nippon EA4 Finish (EP) with EP Hardener when overcoat on Nippon Paint 8048 products.



Ash Grey BS 9093



Ivory BS 4052



Executive Grey 0104



Misty Grey 1457



Fern Green 1460



Dark Green 1458



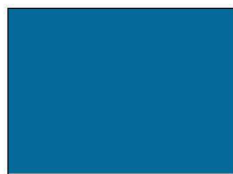
Evergreen 1461



Lime Green 1459



Calm Green BS 6070



Blue 0139



Bright Blue 0632



Orange 0823*



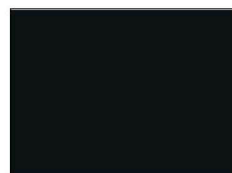
Yellow 0668*



Indian Red 0882*



White BS 9102



Black BS 9103

Use of EP Hardener when overcoat on Nippon Paint 8048 series Product

*Premium Colours

Nippon Paint EA7 Finish

A good performance two pack amine adduct cured epoxy coating that gives a glossy finishing appearance. This finishing makes it suitable for concrete substrates where abrasion resistance is required.



White **BS 9102**



Ash Grey **BS 9093**



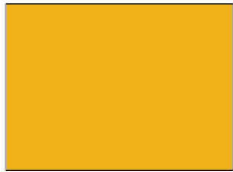
Misty Grey **1457**



Executive Grey **0104**



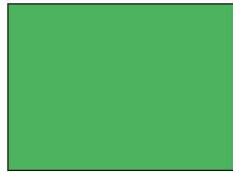
Black **BS 9103**



Golden Yellow **0455**



Signal Red **1411**



Evergreen **1461**



Dark Green **1458**

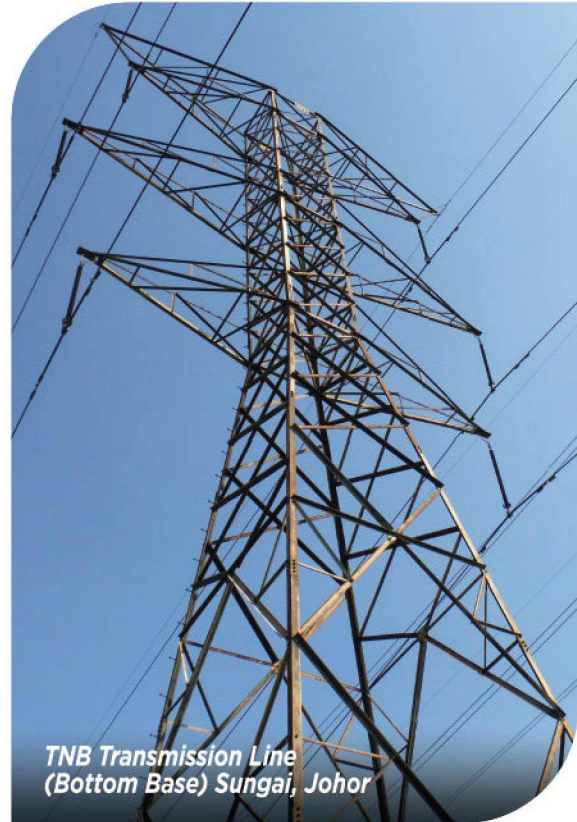


Neptune Blue **9331**



PROJECT REFERENCE

We are proud to be involved in the thousands of completed projects across Malaysia over the years. Here are some projects that used our coating solution to create their strong coat of reputation.





Manjung 4 Turbine Hall, Perak



Kapar Energy Ventures Power Plant, Selangor



Kuala Lumpur Convention Centre, Kuala Lumpur



Kimanis Power Plant, Sarawak



KVMRT Sungai Buloh Depot, Selangor



Kellogg's Factory, Negeri Sembilan

COATING SYSTEM

COATING SYSTEM		PRODUCTS	PRODUCTS	RECOMMENDED SURFACE PREPARATION
NPM 1	Primer	Nippon Paint Zinc Phosphate Primer FD	Alkyd Zinc Phosphate	St 3 or SSPC-SP 3
	Intermediate Finish	Nippon Paint Protective Finish FD Nippon Paint Protective Finish FD	Alkyd Gloss Enamel Alkyd Gloss Enamel	
NPM 2	Primer	Nippon Paint Zinc Phosphate Primer FD	Alkyd Zinc Phosphate	St 3 or SSPC-SP 3
	Intermediate Finish	Nippon Paint Micaceous Iron Oxide (MIO) Nippon Paint Protective Finish FD	Alkyd MIO Alkyd Gloss Enamel	
NPM 3	Primer	Nippon Paint Zinc Phosphate Primer FD	Alkyd Zinc Phosphate	St 3 or SSPC-SP 3
	Intermediate	Nippon Paint Micaceous Iron Oxide (MIO)	Alkyd MIO	
	Finish	Nippon Paint Micaceous Iron Oxide (MIO)	Alkyd MIO	
NPM 4	Primer	Nippon Paint Zinc Phosphate Primer FD	Alkyd Zinc Phosphate	St 3 or SSPC-SP 3
	Intermediate/Finish	Nippon Paint Aluminium Paint	Linseed/Phenolic Aluminium Paint	
NPM 5	Primer	Nippon Paint Etching Primer 120/ Nippon Paint Galvaprimer / Nippon Paint PVB Tech Primer	2-pack Polyvinyl-butyrac acid etching coat	SSPC-SP 1
	Finish	Nippon Paint Protective Finish FD	Alkyd Gloss Enamel	
NPM 6	Primer	Nippon Paint EA9 Finish HB	Amine Adduct Cured Epoxy	SSPC-SP 1
	Finish	Nippon Paint Polyurethane Recoatable Finish	2-pack Aliphatic PU Finish	
NPM 7	Primer	Nippon Paint Zinc Rich Primer HS	2-pack Epoxy (Organic) Zinc Coating	Sa 2.5 or SSPC-SP 10
	Intermediate	Nippon Paint 8048	2-pack Epoxy High Build/Epoxy Mastic	
	Finish	Nippon Paint Polyurethane Recoatable Finish	2-pack Aliphatic PU Finish	
NPM 8	Primer	Nippon Paint Zinc Rich Primer HS	2-pack Epoxy (Organic) Zinc Coating	Sa 2.5 or SSPC-SP 10
	Intermediate	Nippon Paint 8048	2-pack Epoxy High Build/Epoxy Mastic	
	Finish	Nippon Paint EA4 Finish (EP)	2-pack Amine adduct Cured Epoxy Finish	

RECOMMENDED DRY FILM THICKNESS IN MICRONS	TYPES OF SUBSTRATE												
	FOR NEW PAINTING SYSTEM	FOR REPAIRING SYSTEM	STEEL STRUCTURE - EXTERIOR	STEEL STRUCTURE - INTERIOR	GALVANISED STEELWORK (GI) - EXTERIOR	GALVANISED STEELWORK (GI) - INTERIOR	CERAMIC ROOF TILE / METAL ROOFING - EXTERIOR	CERAMIC ROOF TILE / METAL ROOFING - INTERIOR	INTERNAL TANK COATING	MASONRY - EXTERIOR	MASONRY - INTERIOR	CONCRETE FLOOR (INTERIOR)	STEELWORK (HIGH TEMPERATURE)
45													
40	•	•	•	•									
40													
45													
50	•	•	•	•									
45													
45	•	•	•	•									
50													
50	•	•	•	•									
45													
2x35	•	•	•	•									
12	•				•	•							
2x40													
2x50													
50	•				•	•							
75													
125	•		•	•									
50													
75													
125	•			•									
50													

ADDITIONAL INFORMATION

Nippon Paint Zinc Phosphate Primer FD can be replaced by other conventional metal primers e.g Nippon Paint Red Oxide Primer.

For Nippon Paint Protective Finish FD colours, please refer to Nippon Paint 9000 Gloss Finish chart.

Nippon Paint Zinc Phosphate Primer FD can be replaced by other conventional metal primers e.g Nippon Paint Red Oxide Primer.

For Nippon Paint Protective Finish FD colours, please refer to Nippon Paint 9000 Gloss Finish chart.

Nippon Paint Zinc Phosphate Primer FD can be replaced by other conventional metal primers e.g Nippon Paint Red Oxide Primer.

Nippon Paint Zinc Phosphate Primer FD can be replaced by other conventional metal primers e.g Nippon Paint Red Oxide Primer.

For normal service environment, Nippon Paint Etching Primer 120 or Nippon Paint PVB Tech Primer can also be used.

Recommended for corrosive service environment.

Nippon Paint Zinc Rich Primer HS can be replaced by Nippon Paint Nippe zinc E2 Primer (Organic Zinc Coating) and Nippon Paint NIOZ (Inorganic Zinc Coating).

Nippon Paint Zinc Rich Primer HS can be replaced by Nippon Paint Nippe zinc E2 Primer (Organic Zinc Coating) and Nippon Paint NIOZ (Inorganic Zinc Coating).

Epoxy Finish is not recommended for exterior exposure service condition due to its natural tendency to chalk under sunlight (UV).

COATING SYSTEM

COATING SYSTEM	PRODUCTS		PRODUCTS	RECOMMENDED SURFACE PREPARATION
NPM 9	Primer	Nippon Paint 8048 Zinc Phosphate Primer QD	2-pack Epoxy Zinc Phosphate	Sa 2.5 or SSPC-SP 10/St3
	Intermediate	Nippon Paint 8048/8048 MIO	2-pack High Build Epoxy/ Epoxy MIO Mastic	
	Finish	Nippon Paint Polyurethane Recoatable Finish	2-pack Aliphatic PU Finish	
NPM 10	Primer	Nippon Paint 8048 Zinc Phosphate Primer QD	2-pack Epoxy Zinc Phosphate	Sa 2.5 or SSPC-SP 10/St3
	Intermediate	Nippon Paint 8048/8048 MIO	2-pack High Build Epoxy/ Epoxy MIO Mastic	
	Finish	Nippon Paint EA4 Finish (EP)	2-pack Amine Adduct Cured Epoxy Finish	
NPM 11	Primer	Nippon Paint 8048	2-pack surface tolerant epoxy mastic	Sa 2.5 or SSPC-SP 10/St3
	Intermediate	Nippon Paint 8048/8048 MIO	2-pack High Build Epoxy/ Epoxy MIO Mastic	
	Finish	Nippon Paint Polyurethane Recoatable Finish	2-pack aliphatic PU Finish	
NPM 12	Primer	Nippon Paint 8048	2-pack surface tolerant epoxy mastic	Sa 2.5 or SSPC-SP 10/St3
	Intermediate	Nippon Paint 8048/8048 MIO	2-pack High Build Epoxy/ Epoxy MIO Mastic	
	Finish	Nippon Paint EA4 Finish (EP)	2-pack amine adduct cured epoxy finish	
NPM 13	Primer	Nippon Paint EA9 Finish HB	Amine adduct cured epoxy	Sa 2.5 or SSPC-SP 10
	Intermediate	Nippon Paint EA9 Finish HB	Amine adduct cured epoxy	
	Finish	Nippon Paint Polyurethane Recoatable Finish	2-pack aliphatic PU finish	
NPM 14	Primer	Nippon Paint EA9 Finish HB	Amine adduct cured epoxy	SSPC SP-1
	Intermediate	Nippon Paint EA9 Finish HB	Amine adduct cured epoxy	
	Finish	Nippon Paint Protective Acrylic Finish	Single pack solvent based acrylic finish	
NPM 15	Primer	Nippon Paint Arocoat	Coal tar epoxy	Dust free for masonry. For steel Sa 2, Sa 1, St 3 or SSPC-SP 3
	Finish	Nippon Paint Arocoat	Coal tar epoxy	
NPM 16	Primer	Nippon Paint EA9 Red Oxide Primer	Amine adduct cured epoxy primer	Sa 2.5 or SSPC-SP 10
	Intermediate	Nippon Paint EA9 Finish HB	Amine adduct cured epoxy finish for tank coating	
	Finish	Nippon Paint EA9 Finish HB	Amine adduct cured epoxy finish for tank coating	

RECOMMENDED DRY FILM THICKNESS IN MICRONS	TYPES OF SUBSTRATE													ADDITIONAL INFORMATION
	FOR NEW PAINTING SYSTEM	FOR REPAINTING SYSTEM	STEEL STRUCTURE - EXTERIOR	STEEL STRUCTURE - INTERIOR	GALVANISED STEELWORK (GI) - EXTERIOR	GALVANISED STEELWORK (GI) - INTERIOR	CERAMIC ROOF TILE / METAL ROOFING - EXTERIOR	CERAMIC ROOF TILE / METAL ROOFING - INTERIOR	INTERNAL TANK COATING	MASONRY - EXTERIOR	MASONRY - INTERIOR	CONCRETE FLOOR (INTERIOR)	STEELWORK (HIGH TEMPERATURE)	
100														Nippon Paint 8048 Zinc Phosphate Primer QD can be replaced by Nippon Paint 8048-1462 Indian Red.
100	•	•	•	•	•	•								
50														
100														Nippon Paint 8048 Zinc Phosphate Primer QD can be replaced by Nippon Paint 8048-1462 Indian Red.
100	•	•		•										Epoxy Finish is not recommended for exterior exposure service condition due to its natural tendency to chalk under sunlight (UV).
50														
100														For primer coat, Nippon Paint 8048-1462 Indian Red colour is recommended.
100	•	•	•	•	•	•								
50														
100														For primer coat, Nippon Paint 8048-1462 Indian Red colour is recommended.
100	•	•		•										Epoxy Finish is not recommended for exterior exposure service condition due to its natural tendency to chalk under sunlight (UV).
50														
50														This system can be used for Galvanised Steelworks (GI) - Exterior & Interior with surface preparation SSPC-SP1 (Solvent Cleaning).
75	•	•			•	•	•	•		•	•			
50														
50														For repainting system on steel structure and metal roofing, wirebrush to St3, touch up primer Nippon 8048-1462 Red Indian of 60 microns dry film thickness is recommended.
75	•	•				•		•			•			
50														For repainting system on masonry surfaces, the old coating system must be a 2-pack chemical cured coating material.
150	•	•								•				Recommended on sheet pile. Can be used on steel substrate which are buried or shaded where low budget and long term protection are required. Also used in waste treatment plant for tank lining.
150														
60	•			•						•				For more chemical resistance information, please refer to Nippon Paint (M) Sdn Bhd, Technical Sales Dept, Protective Coating Division.
120														
120														

COATING SYSTEM

COATING SYSTEM	PRODUCTS		PRODUCTS	RECOMMENDED SURFACE PREPARATION
NPM 17	Primer Intermediate Finish	Nippon Paint Penetrative Epoxy Primer Nippon Paint EA4 Finish Nippon Paint EA4 Finish	Amidoamine Cured Epoxy Finish Amine adduct cured epoxy finish for floor Amine adduct cured epoxy finish for floor	For new concrete floor, etch with 5% HCL acid, flush with fresh water and let dry. For old concrete floor, flush with fresh water and let dry.
NPM 18	Primer Finish	Nippon Paint 300 High Temperature Primer Nippon Paint 300 High Temperature Finish	Heat resistance silicone acrylic based primer Heat resistance silicone acrylic finish	Sa 2.5 or SSPC-SP 10/St3
NPM 19	Primer Finish	Nippon Paint 600 High Temperature Primer Nippon Paint 600 High Temperature Finish	Heat resistance silicone based primer Heat resistance silicone finish	Sa 2.5 or SSPC-SP 10/St3
NPM 20	Finish	Nippon Paint Protective Acrylic Finish	Acrylic	SSPC-SP 1
NPM 21	Primer Intermediate Finish	Nippon Paint 9049/9049 GF Nippon Paint 9049/9049 GF Nippon Paint 9049/9049 GF	2-pack High Build Epoxy Mastic 2-pack High Build Epoxy Mastic 2-pack High Build Epoxy Mastic	Sa 2.5 or SSPC-SP 10 /St3
NPM 22	Primer Intermediate Finish	Nippon Paint 9049/9049 GF Nippon Paint 9049/9049 GF Nippon Paint Polyurethane Recoatable Finish	2-pack High Build Epoxy Mastic 2-pack High Build Epoxy Mastic 2-pack Aliphatic PU Finish	Sa 2.5 or SSPC-SP 10/St3

RECOMMENDED DRY FILM THICKNESS IN MICRONS	TYPES OF SUBSTRATE													ADDITIONAL INFORMATION
	FOR NEW PAINTING SYSTEM	FOR REPAINTING SYSTEM	STEEL STRUCTURE - EXTERIOR	STEEL STRUCTURE - INTERIOR	GALVANISED STEELWORK (GI) - EXTERIOR	GALVANISED STEELWORK (GI) - INTERIOR	CERAMIC ROOF TILE / METAL ROOFING - EXTERIOR	CERAMIC ROOF TILE / METAL ROOFING - INTERIOR	INTERNAL TANK COATING	MASONRY - EXTERIOR	MASONRY - INTERIOR	CONCRETE FLOOR (INTERIOR)	STEELWORK (HIGH TEMPERATURE)	
30														For more detailed procedure on epoxy floor coating, please refer to Nippon Paint (M) Sdn Bhd, Technical Sales Dept, Protective Coating Division.
75	•	•												
75														
30														Can withstand temperature up to 300°C.
2x30	•												•	
30														Can withstand temperature up to 600°C.
2x30	•												•	
2x40	•				•	•	•			•				Single coating system recommended for application on galvanised telecommunication or power transmission towers.
125														Epoxy Finish is not recommended for exterior exposure service condition due to its natural tendency to chalk under sunlight (UV).
125	•	•		•		•								
125														
125														For more chemical resistance information, please refer to Nippon Paint (M) Sdn Bhd, Technical Sales Dept, Protective Coating Division.
125	•	•	•	•	•	•								
50														

FOR MORE TOTAL COATING SOLUTIONS BY NIPPON PAINT, VISIT
PROFESSIONAL.NIPPONPAINT.COM.MY



NIPPON PAINT (M) SDN. BHD. (196701000578)
Lot 1-17, Taman Perindustrian Subang Utama, Jalan SU 4, 40300 Shah Alam, Selangor Darul Ehsan, Malaysia.
☎ 1-800-88-2663 ✉ customercare@nipponpaint.com.my 📘 facebook.com/nipponpaintmalaysia
🌐 nipponpaint.com.my | professional.nipponpaint.com.my